

Strengthening the Open Source Developer Experience

Jon Harrison
Lead Evangelist & Product Line Manager

JBuilder 2007: Strengthening the Open Source Developer Experience

The Eclipse JDT provides a rich base set of capabilities for Java development, however it is usual to extend these base features with additional plugins to meet the needs of developers. The latest version of JBuilder takes this same approach, building on the Eclipse JDT and integrating popular open source tools to deliver a comprehensive development platform with best in class levels of productivity. This session will demonstrate JBuilder's capabilities over a wide range of development tasks including building JEE applications, optimizing performance of applications, assessing quality of source code, effectively using UML modelling and team working in an interactive and productive way.

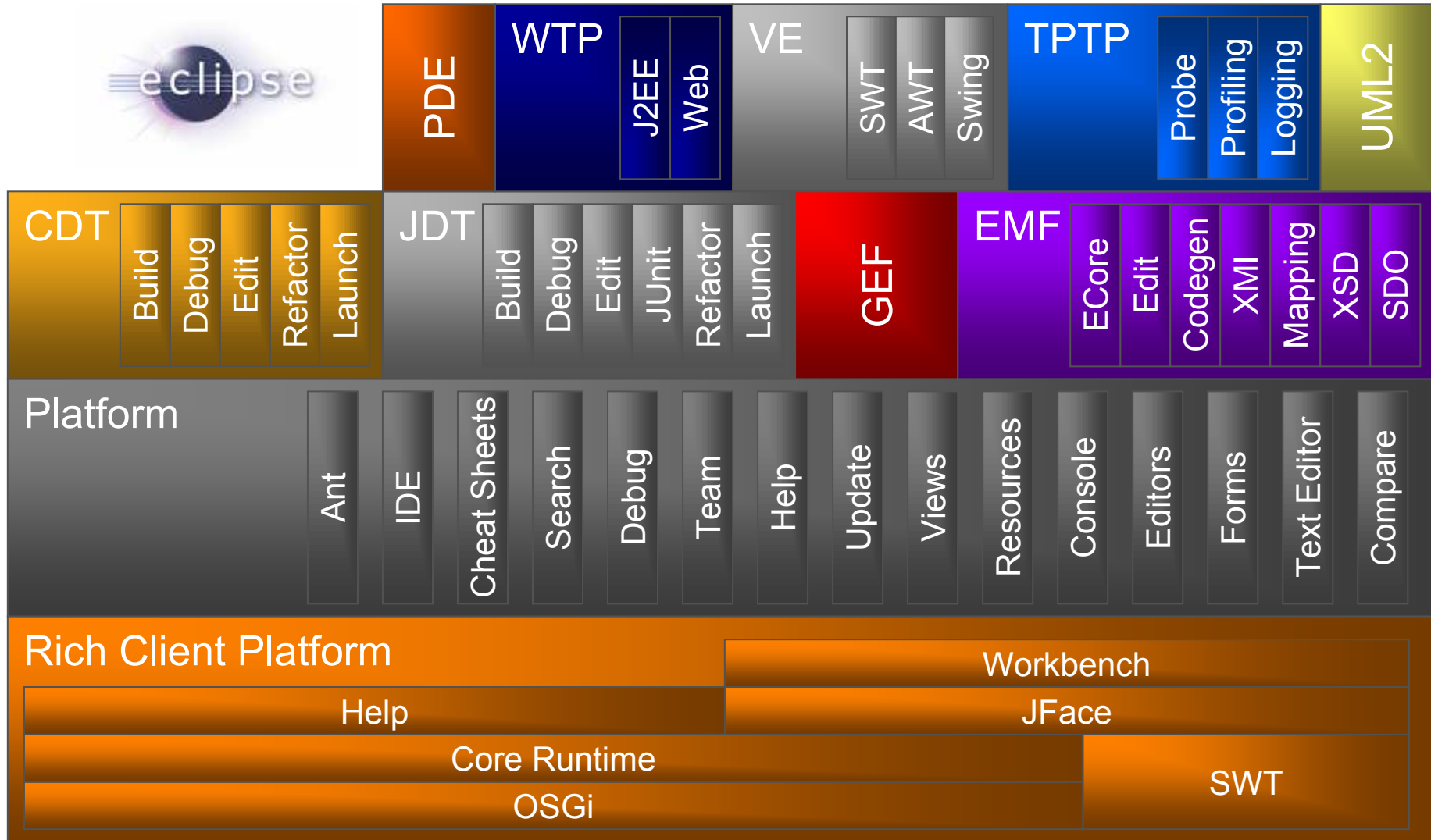
Agenda

- Introduction & Background
- Strengthening the Open Source Developer Experience
 - Team Working
 - Modelling / Designers
 - Application Performance Analysis
- Preview: New Ruby on Rails IDE
- Summary / Q & A Session

Introduction & Background

Building on Open Source (Eclipse)

- Bring the power and value of the Eclipse community to JBuilder users
- Respect and enhance Eclipse capabilities
- Bring forward key developer productivity tools
- Develop a new platform for team productivity



JBuilder on Eclipse

"The Eclipse community welcomes JBuilder to the large family of commercial products built on the Eclipse platform. The JBuilder team has a well deserved reputation for shipping excellent products targeted at the needs of developers. I expect JBuilder 2007 to be a great commercial and community success."

--Mike Milinkovich
Executive Director,
Eclipse Foundation, Inc.



Market Trend	Result	JBuilder Solution
Open Source	Configuration Chaos and Cost	Integrated and Managed
Best of Breed	Integration Nightmare	Flexible blended stacks
Distributed Teams	Project Risk and Uncertainty	TeamInsight and Project Assist
Compliance	Development Paralysis	Audits, Metrics, and Profiling
Model Driven Development	Nice to look at, not always useful	LiveSource, Visual EJB & Visual Web Services

Increasing Developer Productivity

Tools and Frameworks

Java, Mylar¹, OALAB, Struts, Mylar, LIFERAY, Apache Geronimo, Doclet, Axis, GlassFish, Bugzilla, Pmd, JUnit.org

Servers

BEA weblogic, IBM WebSphere, Sun, JBoss

IDEs

Eclipse, NetBeans

Flexible blended stacks

Team Working

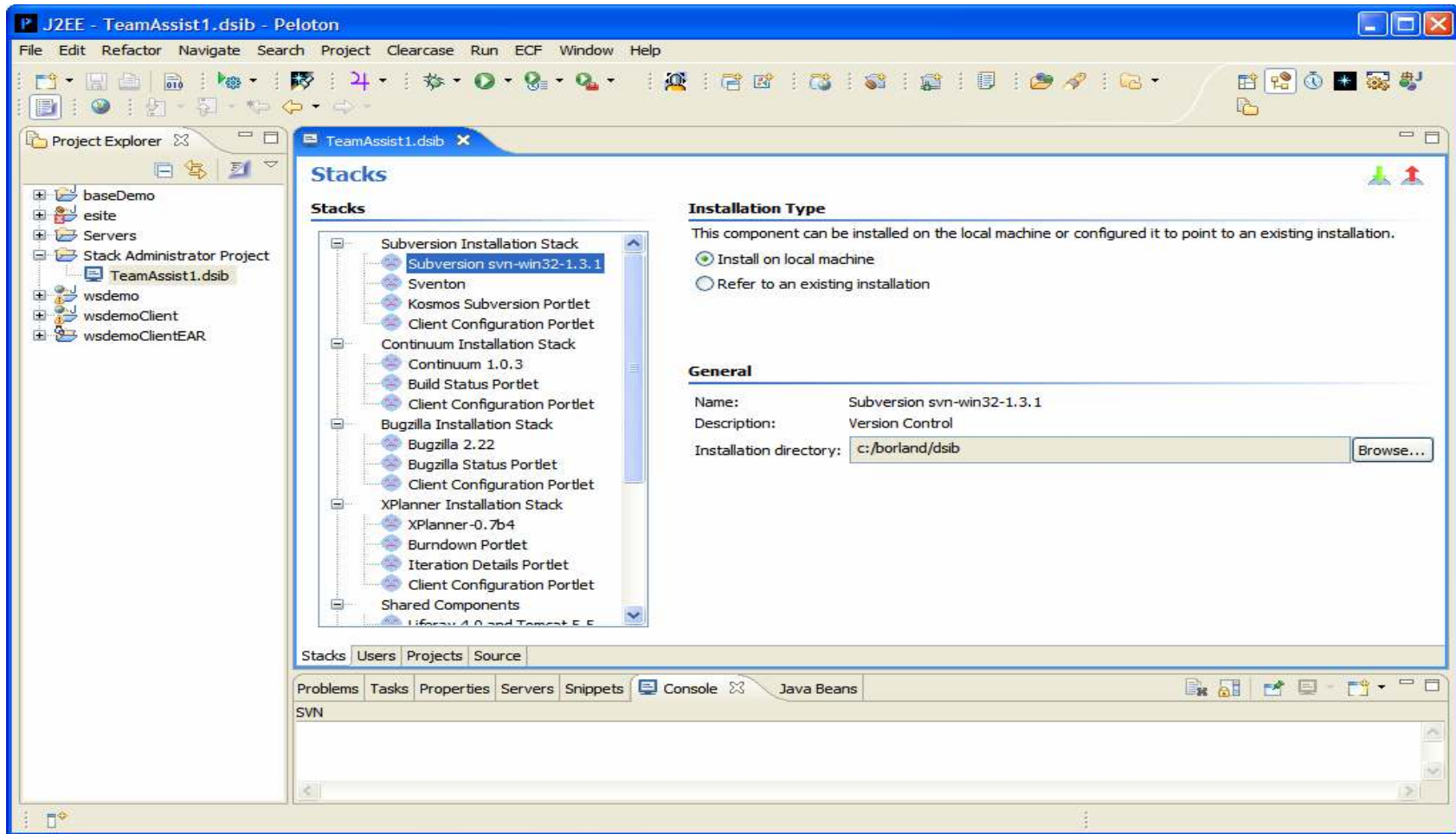
TeamInsight & ProjectAssist

ProjectAssist & TeamInsight

- Developer tooling automation
 - Source code management
 - Bug tracking
 - Requirements management
 - Project planning and tracking
 - Continuous integration builds

ProjectAssist Server

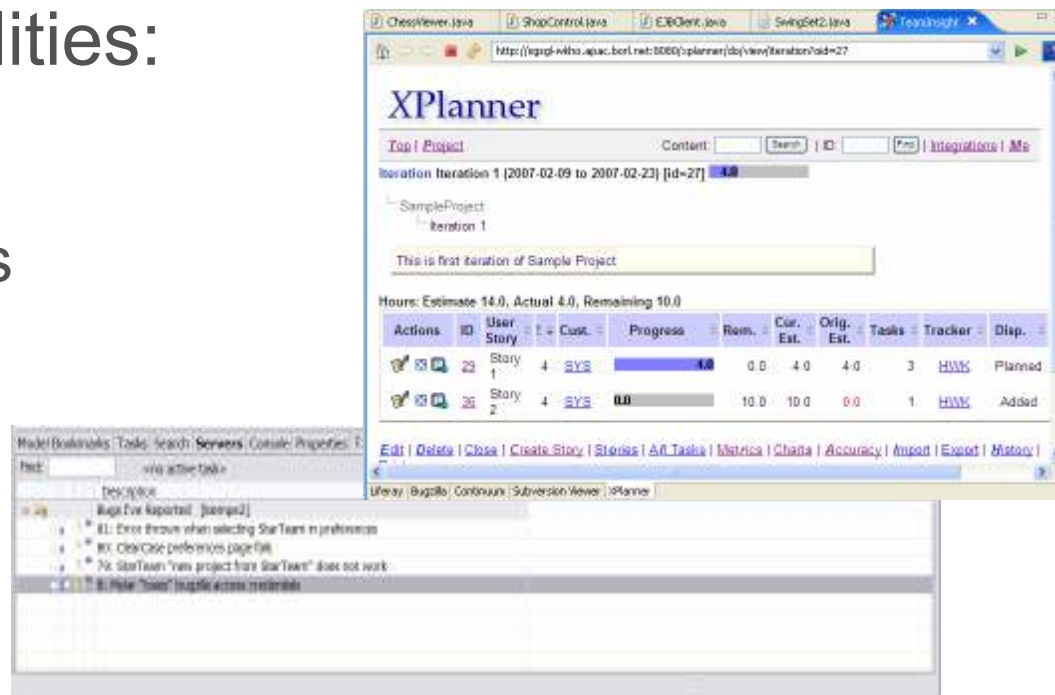
- Installation / Assimilation and Configuration
 - StarTeam
 - Subversion
 - Bugzilla
 - Continuum
 - XPlanner
- Create new users, add users to new or existing projects



TeamInsight

- In-IDE integration provides a unified view of each developer's project responsibilities:

- Bugs
- Change Requests
- Code Notes
- Tasks
- Requirements



TeamInsight Project Portal

- Unified Project portal for up-to-the-minute project status
- Provide statistics to reflect the progress and health of project
 - Burndown charts
 - QALab Summary
 - Bugzilla Status
 - Repository Activity

TeamInsight Project Portal

The screenshot displays the TeamInsight Project Portal interface, which is divided into several sections:

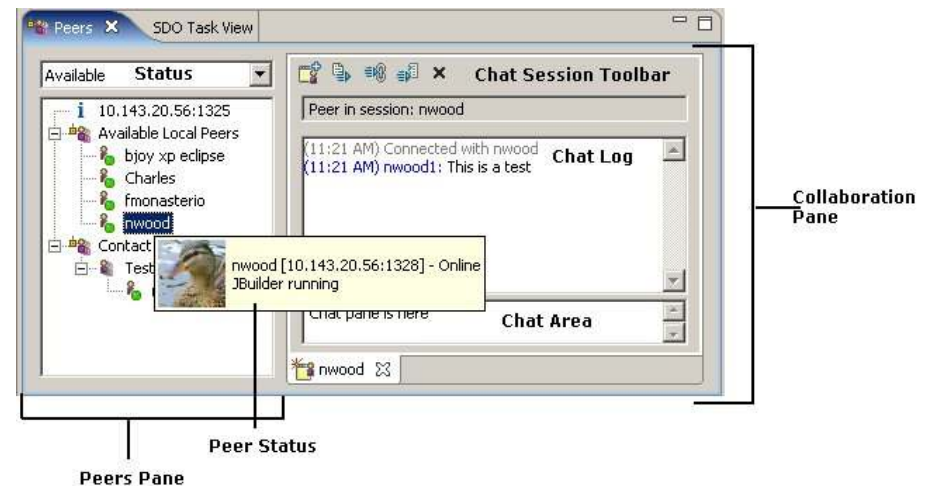
- Bugzilla Status:** A table listing bugs with columns for ID, severity, priority, assignee, status, and summary. Red circles highlight the table header and several rows of data.
- Subversion Source Monitoring:** A panel showing repository location, revision, and commit information. A red circle highlights the repository location and revision details.
- Server:** A panel displaying system metrics such as uptime, free memory, total memory, and maximum memory. A red circle highlights the server information.
- Burn Down Chart:** A line graph showing the progress of work over time. A red circle highlights the chart area.
- Current Iteration Details:** A table showing the status of various tasks and their completion percentages. A red circle highlights the task list.
- Build Status:** A table showing the status of different build configurations. A red circle highlights the build status table.

Red circles and text annotations are overlaid on the screenshot to highlight key features:

- Key source code metrics:** A red circle around the Subversion Source Monitoring and Server panels.
- Quick view of bug stats:** A red circle around the Bugzilla Status table.
- More under development...:** A red circle around the Burn Down Chart.
- Work completed against features:** A red circle around the Current Iteration Details table.
- Features actively being developed:** A red circle around the Build Status table.
- Project document management:** A red circle around the Folders section.
- Recent builds & results:** A red circle around the Build Status table.

TeamInsight Virtual Peer Communication

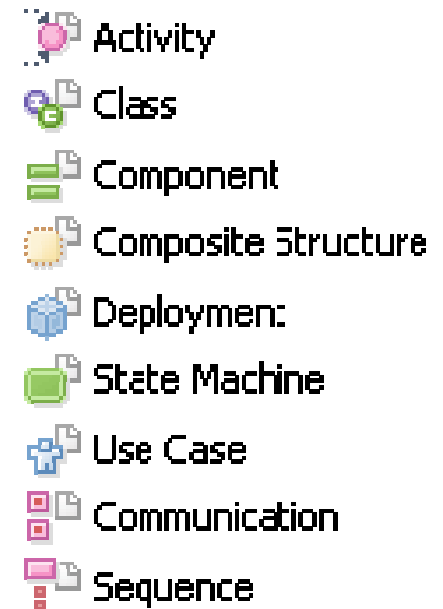
- Virtual Peer Communication supports remote code reviews and agile development
 - Automatic discovery of peers
 - Collaboration pane with logging
 - Contact Groups
 - Sharing Projects
 - Send files, stack traces, etc



Modelling with LiveSource

LiveSource Capabilities

- UML 1.4 and UML 2.0 modelling for Java projects with LiveSource™
- Documentation generation
- Audits & Metrics
- Generate Sequence diagram from implementation



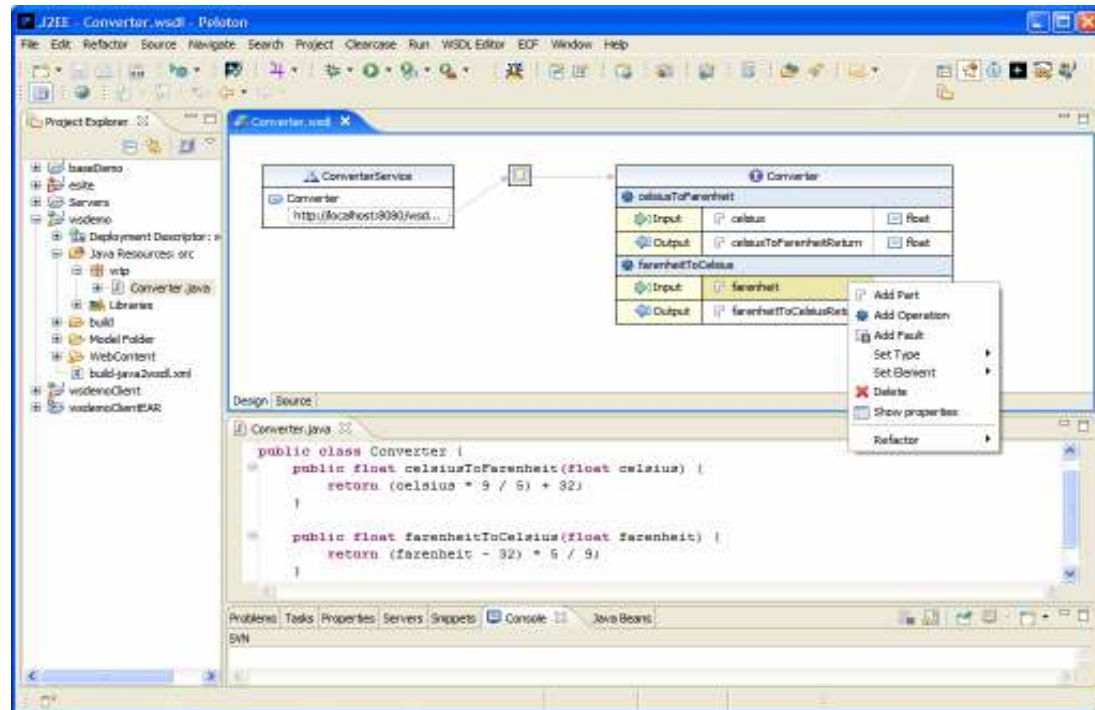
Graphical EJB Workbench

- EJB LiveSource
 - Full round tripping. No lock in. All source files are preserved. Effective way to do EJB development.
 - Changes to source codes, annotations, properties view and graphical view are always in sync
 - Edit EJBs outside of JBuilder
- EJB 3.0 Migration
 - Legacy EJB 2.x converted to annotations
- Targeting and re-targeting AppServers from major commercial and OSS vendors



Web Services

- Visual 2-way designer
- Visual representation of WSDL



Demonstration

- JEE Applications / Web Services
- LiveSource: Code Archeology, Audits & Metrics

Understanding Application Performance

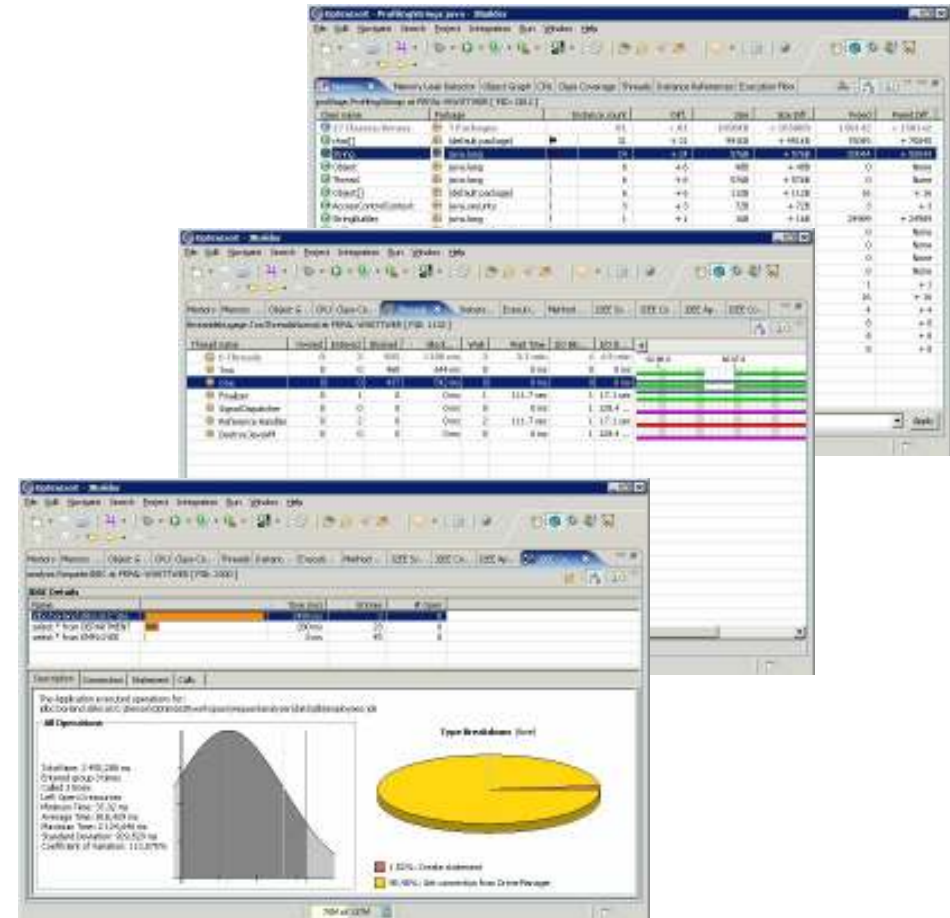
Optimizeit

Understanding Application Performance

- Optimizelt is fully integrated into the IDE
- Improve performance and reliability of any Java code
- Requires no code modifications
- Easily connects to a remote Java process to test a program running on a different machine

Understanding Application Performance

- In IDE integration
 - Profiler
 - Thread Debugger
 - Code Coverage
 - Request Analyser



Demonstration

- Understanding application performance

Preview: New Ruby on Rails IDE

Early Field Test - Not Feature Complete !

RoR IDE Goals

- Accelerate both Ruby and Ruby on Rails development.
- Increase productivity of experienced programmers
- Help new programmers learn
- Merge best of command-line and IDE features

Ruby on Rails IDE Themes

- Full IDE for Ruby on Rails
- Powerful Ruby & Rails code editing
- Ruby and Rails code insight
- Rails-specific visualizations
- Commanders
- Wizards and actions for productivity boost

Sneak Preview

Early Field Test – not feature complete !

Field Test in progress

Early Stages, not feature complete

If interested in joining, email:

jon.harrison@codegear.com

Summary

JBuilder 2007 builds on Open Source

- RAD Two-way Visual development of EJBs and SOA Web Services Together Livesource Java class and component modeling
- Optimizelt Code Profiling
- TeamInsight open source lifecycle integration, monitoring, and management
- ProjectAssist automated stack installation and configuration
- Team stack/configuration sharing
- Peer to Peer with discovery

Market Reaction

- InfoWorld IDE Comparison
“...JBuilder 2007 is the clear choice — and a truly standout IDE.”
http://www.infoworld.com/article/07/03/26/13FEjavaides_1.html
- Bola Rotibi, principal analyst at Ovum
“JBuilder 2007 is about continuing the same rich and comprehensive development environment that Borland’s Developer Tools Group achieved with the JBuilder product line, but is now based on Eclipse. As customers look to maximize the capabilities of Eclipse, they will need to look to those providers who can confidently provide strong and rich development and management support whilst embracing the open Eclipse community. CodeGear's JBuilder 2007 will be well placed in such a market.”

JBuilder Enterprise

Team oriented Java focused IDE for agile team development. Includes UML features and Team Server single Eclipse Client.

JBuilder

High Performance Agile Java focused IDE with RAD and Performance oriented developer features.

More Information

<http://www.codegear.com/>

- JBuilder 2007 Enterprise Trial
- JBuilder Videos
<http://dn.codegear.com/article/33880>
- The JBuilder Hour
<http://dn.codegear.com/tv/java>

Q & A Session

Thank you!

Jon Harrison
jon.harrison@codegear.com